





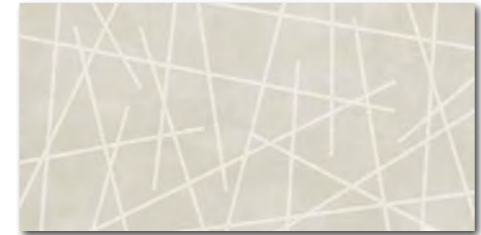
WADV820
76 | m²
mat | matt | **V3**

WARV820
78 | m²
mat | matt | **V3**

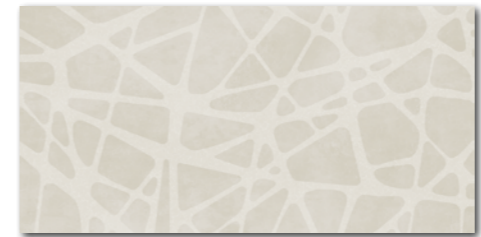


WADV821
76 | m²
mat | matt | **V3**

WARV821
78 | m²
mat | matt | **V3**



WADV826
84 | m²
matlesk | mattglossy | **V4**



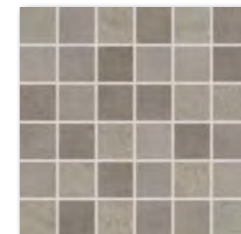
WARV833
86 | m²
matlesk | mattglossy | **V4**



WARV831
86 | m²
matlesk | mattglossy | **V4**



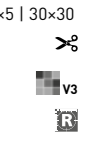
WDM05820 (SET)
66 | set
mat | matt
slonová kost | ivory



WDM05821 (SET)
66 | set
mat | matt
hnědošedá | brown-grey



30x60

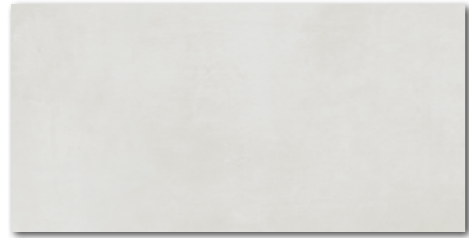


5x5 | 30x30

výrobek product	30x60	298x598x8	EN	8	5,56	1,44	40	57,60	21,3	14,8	876
obkládačka wall tile	30x60	298x598x8	EN 14411 - L BIII	8	5,56	1,44	40	57,60	21,3	14,8	876
mozaika set 30x30 cm mosaic sheet 30x30 cm	5x5	48x48x8	STO č. 030 - 059826	4	11	0,36	-	-	5,2	14,8	-

Balení výrobku obsahuje nahoditý mix designů. | The products are deliberately mixed in packing to include a random selection of designs.

30x60



WADVK822
76 | m²
mat | matt | **V3**

WARVK822
78 | m²
mat | matt | **V3**



WADVK823
76 | m²
mat | matt | **V3**

WARVK823
78 | m²
mat | matt | **V3**



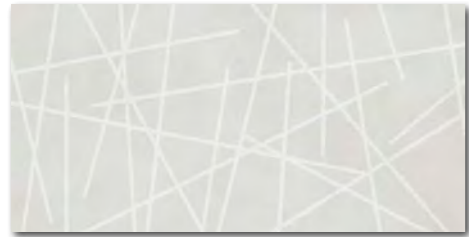
WADVK824
76 | m²
mat | matt | **V3**

WARVK824
78 | m²
mat | matt | **V3**



WADVK825
76 | m²
mat | matt | **V3**

WARVK825
78 | m²
mat | matt | **V3**



WADVK827
84 | m²
matlesk | mattlglossy | **V4**



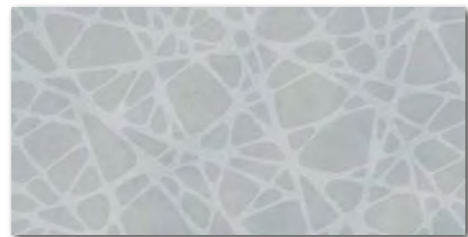
WADVK828
84 | m²
matlesk | mattlglossy | **V4**



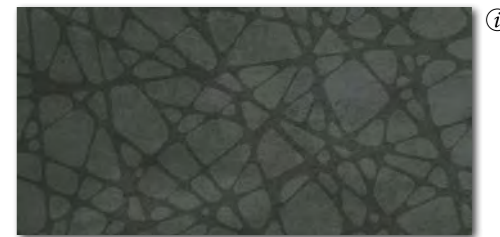
WADVK829
84 | m²
matlesk | mattlglossy | **V4**



WARVK834
86 | m²
matlesk | mattlglossy | **V4**



WARVK835
86 | m²
matlesk | mattlglossy | **V4**



WARVK836
86 | m²
matlesk | mattlglossy | **V4**



WARVK832
86 | m²
matlesk | mattlglossy | **V4**

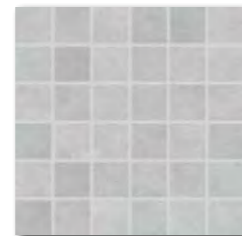


5x5 | 30x30

V3



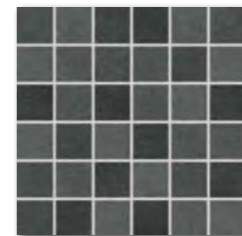
WDM05822 (SET)
66 | set
mat | matt
bílá | white



WDM05823 (SET)
66 | set
mat | matt
světle šedá | light grey



WDM05824 (SET)
66 | set
mat | matt
tmavě šedá | dark grey



WDM05825 (SET)
66 | set
mat | matt
černá | black

5x5 | 30x30

V3

výrobek | product



EN



ks/m²



mm



kg



kg/m²



brutto kg

obkládačka | wall tile 30x60 298x598x8 EN 14411 - L BIII 8 5,56 1,44 40 57,60 21,3 14,8 876
mozaika set 30x30 cm | mosaic sheet 30x30 cm 5x5 48x48x8 STO č. 030 - 059826 4 11 0,36 - - 5,2 14,8 -

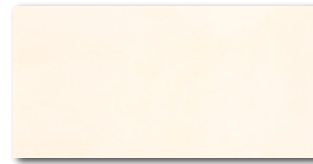
i Balení výrobku obsahuje nahoditý mix designů. | The products are deliberately mixed in packing to include a random selection of designs.



20x40



WADMB719
 ○ 68 l m²
 mat | matt | **V2**
 bíloběžová | white-beige



WADMB720
 ○ 68 l m²
 mat | matt | **V2**

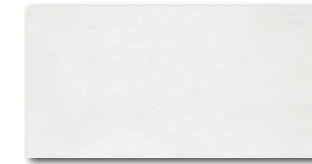


WADMB721
 ○ 68 l m²
 mat | matt | **V2**

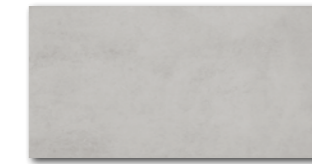


WADMB722
 ○ 68 l m²
 mat | matt | **V2**

bílošedá | white-grey



WADMB723
 ○ 68 l m²
 mat | matt | **V2**



WADMB724
 ○ 68 l m²
 mat | matt | **V2**



20x40



WADMB220
 ○ 76 l m²
 mat | matt | **V4**
 slonová kost | ivory



WADMB223
 ○ 76 l m²
 mat | matt | **V4**
 světle šedá | light grey

40x2



WLRMG719
 ○ 52 l ks
 mat | matt



WLRMG720
 ○ 52 l ks
 mat | matt



WLRMG721
 ○ 52 l ks
 mat | matt



WLRMG722
 ○ 52 l ks
 mat | matt



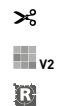
WLRMG723
 ○ 52 l ks
 mat | matt



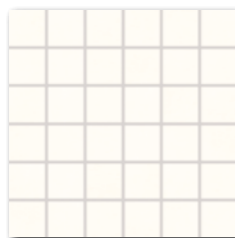
WLRMG724
 ○ 52 l ks
 mat | matt

40x2

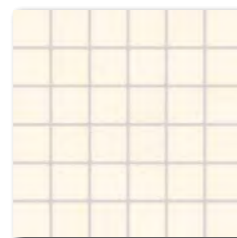
5x5 | 30x30



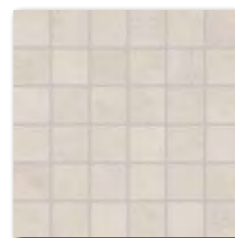
V2



WDM05719 (SET)
 ○ 66 l set
 mat | matt
 bíloběžová | white-beige



WDM05720 (SET)
 ○ 66 l set
 mat | matt
 slonová kost | ivory



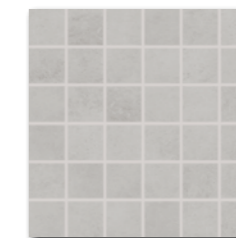
WDM05721 (SET)
 ○ 66 l set
 mat | matt
 hnědošedá | brown-grey



WDM05722 (SET)
 ○ 66 l set
 mat | matt
 bílošedá | white-grey



WDM05723 (SET)
 ○ 66 l set
 mat | matt
 světle šedá | light grey



WDM05724 (SET)
 ○ 66 l set
 mat | matt
 tmavě šedá | dark grey

5x5 | 30x30



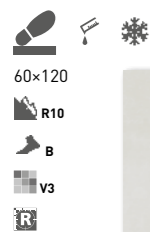
V2

výrobek | product



výrobek product	20x40	40x2	5x5 30x30	EN	ks/m ²	m ²	m ²	m ²	kg	kg/m ²	netto kg
obkládačka wall tile	20x40	198x398x7	EN 14411 - L BIII	20	12,5	1,60	48	76,80	20,6	12,9	1 016
reliéfní listela relief listel	40x2	398x20	STO č. 030 - 040753	12	125	0,09	-	-	1,7	18,9	-
mozaika set 30x30 cm mosaic sheet 30x30 cm	5x5	48x48x7	STO č. 030 - 059826	3/4	11	0,27/0,36	-	-	3,5/4,8	12,9	-

i Balení výrobku obsahuje nahodilý mix designů. | The products are deliberately mixed in packing to include a random selection of designs.



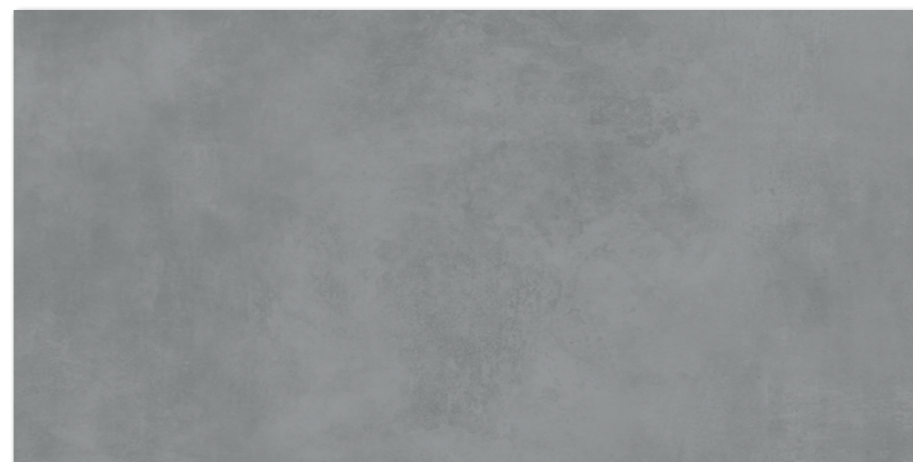
DARV1722
PEI 5 \odot 87 | m²
mat | matt
bílá | white



DARV1723
PEI 4 \odot 87 | m²
mat | matt
světle šedá | light grey



DARV1720
PEI 5 \odot 87 | m²
mat | matt
slonová kost | ivory



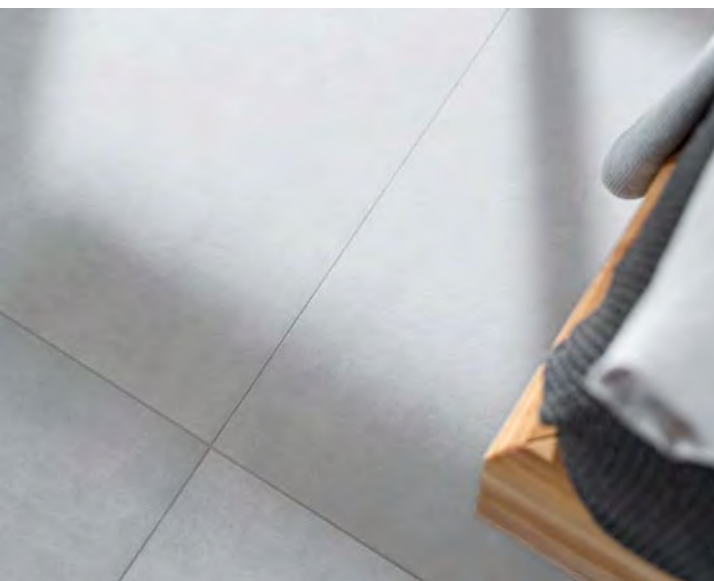
DARV1724
PEI 4 \odot 87 | m²
mat | matt
tmavě šedá | dark grey



DARV1721
PEI 4 \odot 87 | m²
mat | matt
hnědošedá | brown-grey



DARV1725
PEI 4 \odot 87 | m²
mat | matt
černá | black



DAR81722
PEI 5 ○ 83 | m²
mat | matt



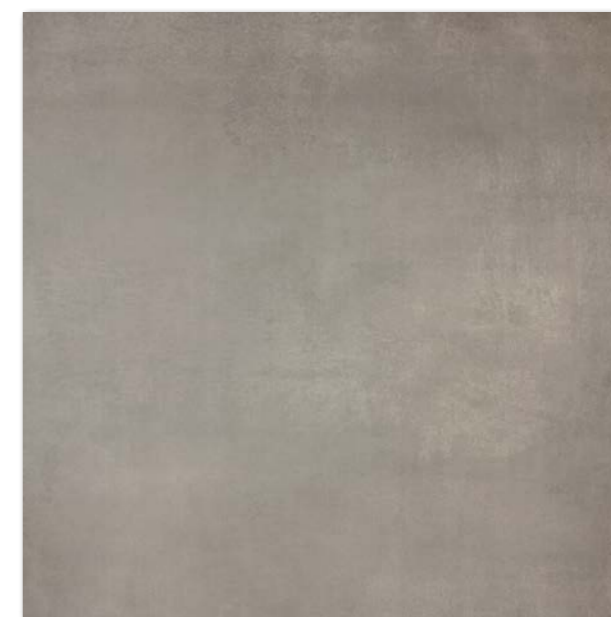
DAR84722
PEI 5 ○ 83 | m²
mat | matt
bílá | white



DAR81720
PEI 5 ○ 83 | m²
mat | matt



DAR84720
PEI 5 ○ 83 | m²
mat | matt
slonová kost | ivory



DAR81721
PEI 4 ○ 83 | m²
mat | matt



DAR84721
PEI 4 ○ 83 | m²
mat | matt
hnědošedá | brown-grey

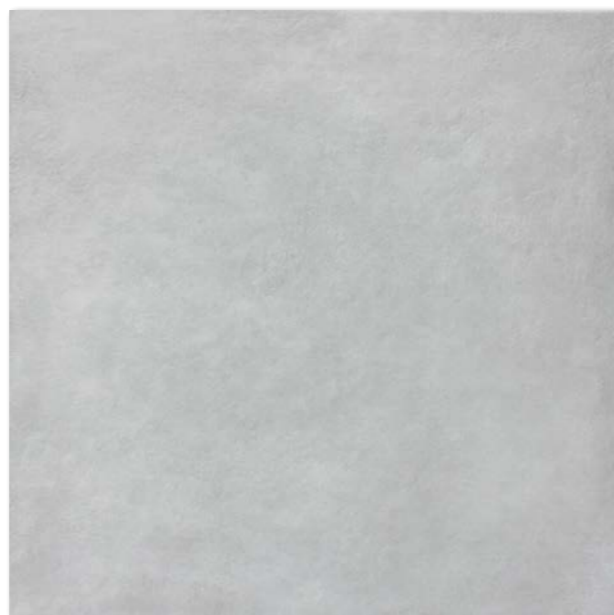


výrobek | product

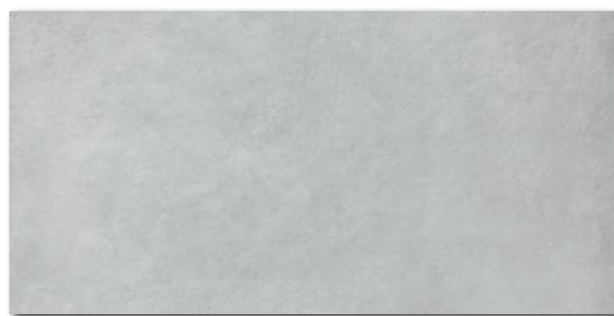


80-80	798-798-10	EN 14411 - G Bla	2	1,6	1,28	42	53,76	28,0	21,9	1 202
40-80	398-798-10	EN 14411 - G Bla	4	3,1	1,28	42	53,76	28,0	21,9	1 202

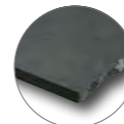
Doporučené skladby formátů viz str. 500-501. | Recommended combinations of modular sizes see pages 500-501.



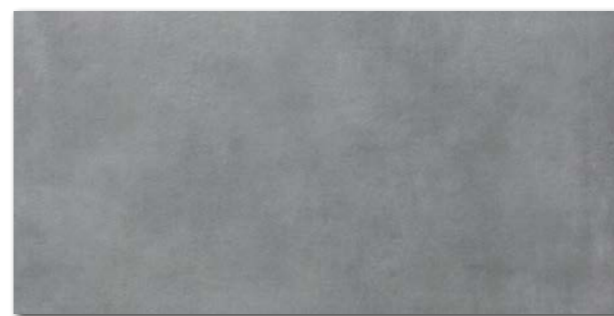
DAR81723
PEI 4 ○ 83 | m²
mat | matt



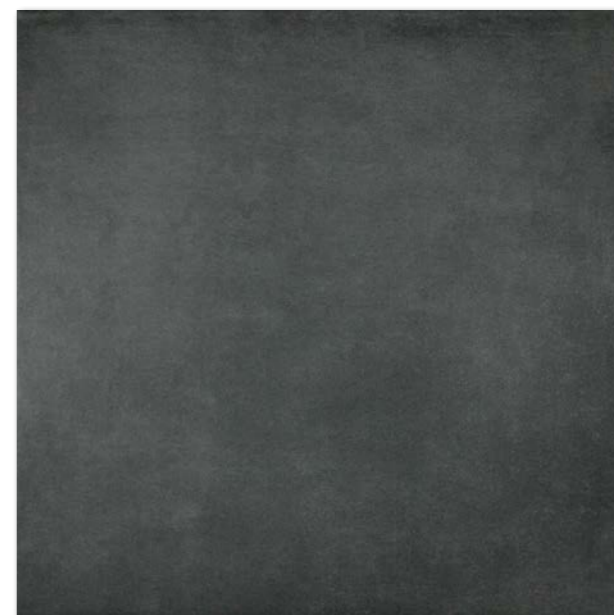
DAR84723
PEI 4 ○ 83 | m²
mat | matt
světle šedá | light grey



DAR81724
PEI 4 ○ 83 | m²
mat | matt



DAR84724
PEI 4 ○ 83 | m²
mat | matt
tmavě šedá | dark grey



DAR81725
PEI 4 ○ 83 | m²
mat | matt



DAR84725
PEI 4 ○ 83 | m²
mat | matt
černá | black



80x80

R10

B

V3

R

40x80

R10

B

V3

R

výrobek | product



dlaždice | floor tile
dlaždice | floor tile

80-80
40-80

798-798-10
398-798-10

EN 14411 - G Bla
EN 14411 - G Bla

2
4

1,6
3,1

1,28
1,28

42
42

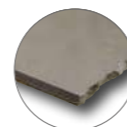
53,76
53,76

28,0
28,0

21,9
21,9

1 202
1 202

Doporučené skladby formátů viz str. 500-501. | Recommended combinations of modular sizes see pages 500-501.



DAR63722
PEI 5 ○ 82 | m²
mat | matt



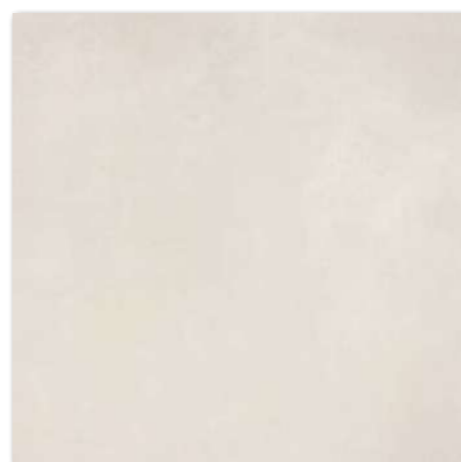
DARSE722
PEI 5 ○ 82 | m²
mat | matt



DAR4H722
PEI 5 ○ 76 | m²
mat | matt



DDVP4722 (SET)
PEI 5 ○ 84 | set
mat | matt
bílá | white



DAR63720
PEI 5 ○ 82 | m²
mat | matt



DARSE720
PEI 5 ○ 82 | m²
mat | matt



DAR4H720
PEI 5 ○ 76 | m²
mat | matt



DDVP4720 (SET)
PEI 5 ○ 84 | set
mat | matt
stonová kost | ivory



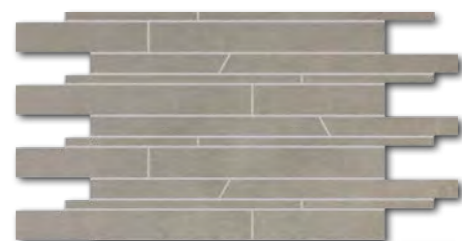
DAR63721
PEI 4 ○ 82 | m²
mat | matt



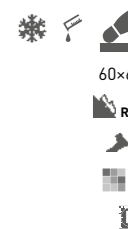
DARSE721
PEI 4 ○ 82 | m²
mat | matt



DAR4H721
PEI 4 ○ 76 | m²
mat | matt



DDVP4721 (SET)
PEI 4 ○ 84 | set
mat | matt
hnědošedá | brown-grey

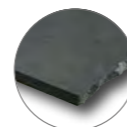
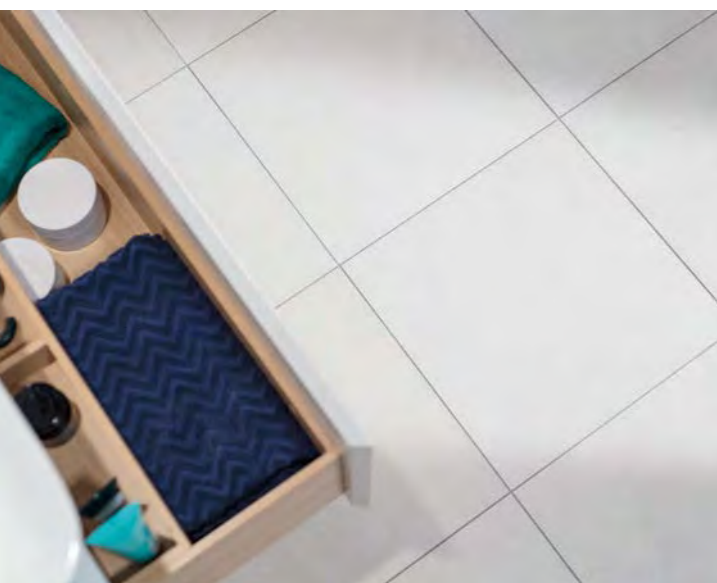


výrobek | product



výrobek product	cm	mm W	EN	ks/m ²	m ²	m ²	m ²	m ²	kg	kg/m ²	kg
dlaždice floor tile	60×60	598×598×10	EN 14411 - G Bla	3	2,8	1,08	32	34,56	23,7	21,9	782
dlaždice floor tile	30×60	298×598×10	EN 14411 - G Bla	6	5,6	1,08	40	43,20	23,7	21,9	971
dlaždice floor tile	45×45	445×445×8	EN 14411 - G Bla	6	5	1,21	34	41,14	21,1	17,4	741
dekor (set) decor (sheet)	30×45	298×445×8	EN 14411 - G Bla	5	7,4	0,68	36	-	10,5	17,4	-

Doporučené skladby formátů viz str. 500-501. | Recommended combinations of modular sizes see pages 500-501.



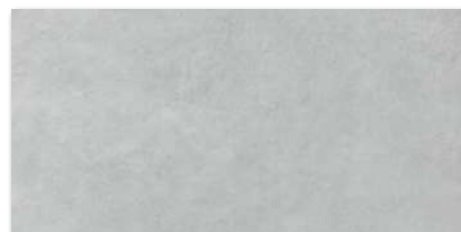
DAR63723
PEI 4 ○ 82 | m²
mat | matt



DAR63724
PEI 4 ○ 82 | m²
mat | matt



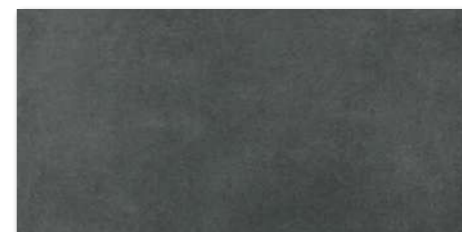
DAR63725
PEI 4 ○ 82 | m²
mat | matt



DARSE723
PEI 4 ○ 82 | m²
mat | matt



DARSE724
PEI 4 ○ 82 | m²
mat | matt



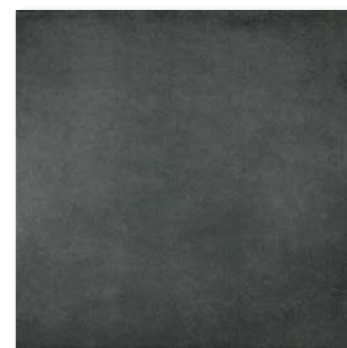
DARSE725
PEI 4 ○ 82 | m²
mat | matt



DAR4H723
PEI 4 ○ 76 | m²
mat | matt



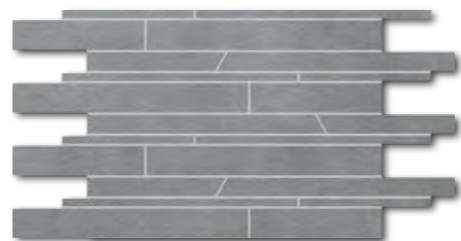
DAR4H724
PEI 4 ○ 76 | m²
mat | matt



DAR4H725
PEI 4 ○ 76 | m²
mat | matt



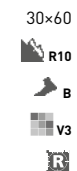
DDVP4723 (SET)
PEI 4 ○ 84 | set
mat | matt
světle šedá | light grey



DDVP4724 (SET)
PEI 4 ○ 84 | set
mat | matt
tmavě šedá | dark grey



DDVP4725 (SET)
PEI 4 ○ 84 | set
mat | matt
černá | black



výrobek | product



EN



výrobek product	cm	mm	EN	ks/m ²	m ²	m ³	m ²	m ³	kg	kg/m ²	kg
dlaždice floor tile	60×60	598×598×10	EN 14411 - G Bla	3	2,8	1,08	32	34,56	23,7	21,9	782
dlaždice floor tile	30×60	298×598×10	EN 14411 - G Bla	6	5,6	1,08	40	43,20	23,7	21,9	971
dlaždice floor tile	45×45	445×445×8	EN 14411 - G Bla	6	5	1,21	34	41,14	21,1	17,4	741
dekor (set) decor (sheet)	30×45	298×445×8	EN 14411 - G Bla	5	7,4	0,68	36	-	10,5	17,4	-

Doporučené skladby formátů viz str. 500-501. | Recommended combinations of modular sizes see pages 500-501.



30x30
20x20
10x10
5x5 | 30x30

R10

B

V3



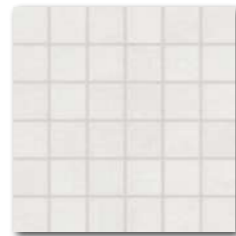
DAR34722
PEI 5 72 | m²
mat | matt
bílá | white



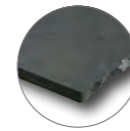
DAR26722
PEI 5 90 | m²
mat | matt



DAR12722 (SET)
PEI 5 94 | m²
mat | matt



DDM06722 (SET)
PEI 5 72 | set
mat | matt



30x30
20x20
10x10
5x5 | 30x30

R10

B

V3



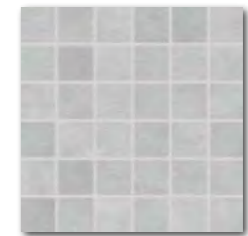
DAR34723
PEI 4 72 | m²
mat | matt
světle šedá | light grey



DAR26723
PEI 4 90 | m²
mat | matt



DAR12723 (SET)
PEI 4 94 | m²
mat | matt



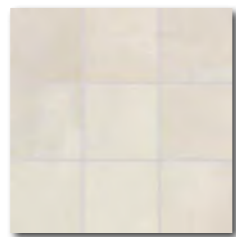
DDM06723 (SET)
PEI 4 72 | set
mat | matt



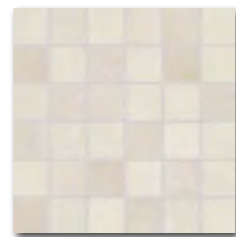
DAR34720
PEI 5 72 | m²
mat | matt
slonová kost | ivory



DAR26720
PEI 5 90 | m²
mat | matt



DAR12720 (SET)
PEI 5 94 | m²
mat | matt



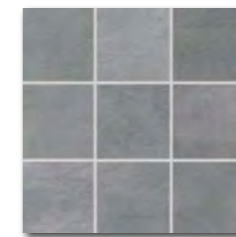
DDM06720 (SET)
PEI 5 72 | set
mat | matt



DAR34724
PEI 4 72 | m²
mat | matt
tmavě šedá | dark grey



DAR26724
PEI 4 90 | m²
mat | matt



DAR12724 (SET)
PEI 4 94 | m²
mat | matt



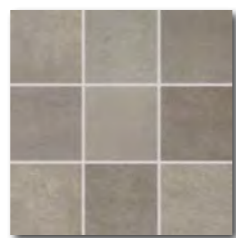
DDM06724 (SET)
PEI 4 72 | set
mat | matt



DAR34721
PEI 4 72 | m²
mat | matt
hnědošedá | brown-grey



DAR26721
PEI 4 90 | m²
mat | matt



DAR12721 (SET)
PEI 4 94 | m²
mat | matt



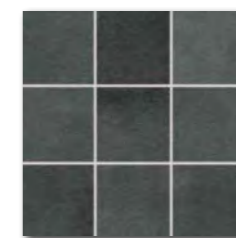
DDM06721 (SET)
PEI 4 72 | set
mat | matt



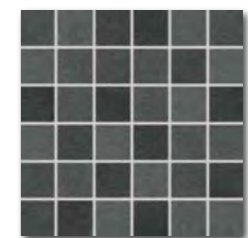
DAR34725
PEI 4 72 | m²
mat | matt
černá | black



DAR26725
PEI 4 90 | m²
mat | matt



DAR12725 (SET)
PEI 4 94 | m²
mat | matt



DDM06725 (SET)
PEI 4 72 | set
mat | matt

výrobek | product



EN



ks/m²



kg



ks

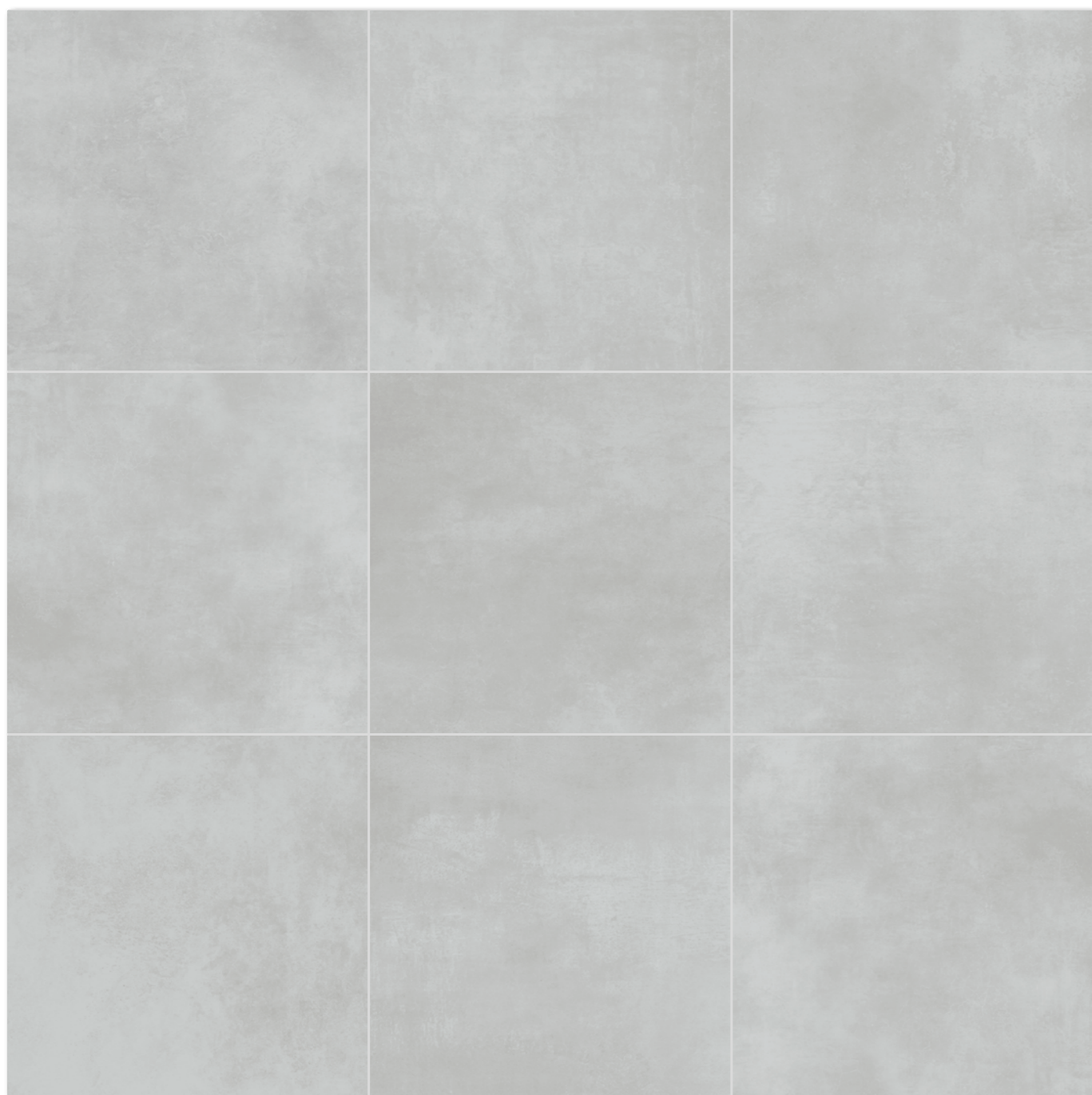


kg/m²



ks

výrobek product	cm	mm	EN	ks/m ²	kg	ks	kg/m ²	ks
dlaždice floor tile	30x30	298x298-8	EN 14411 - G Bla	13	11	1,18	48	56,64
dlaždice floor tile	20x20	197x197-10	EN 14411 - G Bla	23	25	0,92	57	52,44
dlaždice floor tile	10x10	98x98-10	EN 14411 - G Bla	10	11	0,91	56	50,96
mozaika set 30x30 cm mosaic sheet 30x30 cm	5x5	48x48-10	EN 14411 - G Bla	3	11	0,27	-	-

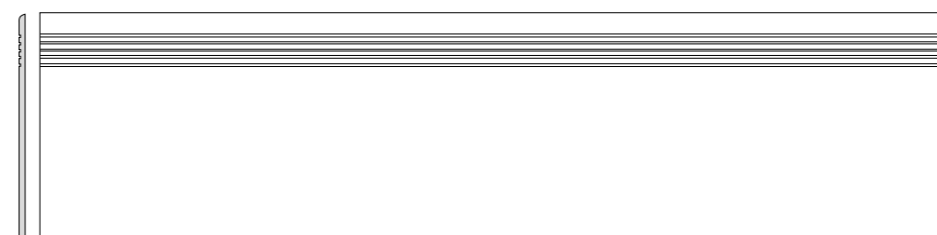


Všechny výrobky celé série vykazují velké odchylky odstínové difference V3. | All products of the entire batch show big deviations in shade difference V3.

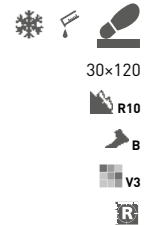
Před pokládkou doporučujeme jednotlivé obkladové prvky vybírat z několika kartonů a výslednou plochu komponovat podle inspirativní fotodokumentace z katalogů RAKO případně z webových stránek www.rako.cz. Žadoucí je kombinace všech jednotlivých designů obkladových prvků včetně jejich natáčení o 90° nebo 180° tak, aby bylo dosaženo vyváženého vzhledu obkládané plochy.

Before laying the tiles, we suggest you selectb from several cartons and arrange them as illustrated in the inspiration photo documentation in RAKO catalogues or website www.rako.eu, and mix the tiles to achieve the required result including turning them by 90° or 180°.

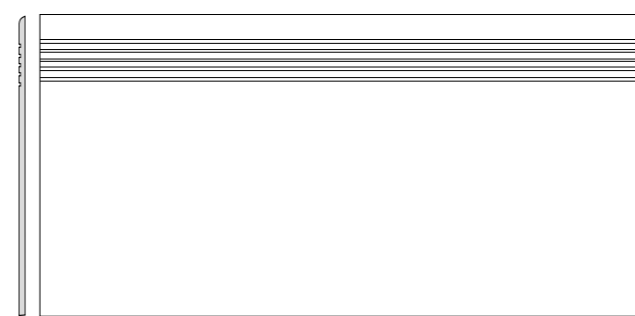
výrobek product	cm	mm	EN	ks/m ²	ks/m ²	ks/m ²	ks/m ²	ks/m ²	kg/m ²	kg/m ²
schodovka step tile	30×120	298×1198×10	STO č. 030 - 059824	3/5	2,8	1,08/1,8	-	-	24,6/40,9	22,7
schodovka step tile	40×80	398×798×10	STO č. 030 - 059824	2	3,1	0,64	-	-	14,1	21,9
schodovka step tile	30×60	298×598×10	STO č. 030 - 059824	6	5,6	1,08	40	-	23,7	21,9
sokl skirting plinth	80×9,5	798×95×10	STO č. 030 - 059824	10	13,2	0,76	-	-	16,7	21,9
sokl skirting plinth	60×9,5	598×95×10	STO č. 030 - 059824	13	17,5	0,74	-	-	16,2	21,9
sokl skirting plinth	45×8,5	445×85×8	STO č. 030 - 059824	25	26,1	0,96	-	-	16,7	17,4
schodová tvarovka special step tile	40×80	398×798×10	STO č. 030 - 059824	2	-	-	-	-	-	-
schodová tvarovka special step tile	30×120	298×1198×10	STO č. 030 - 059824	2	-	-	-	-	-	-



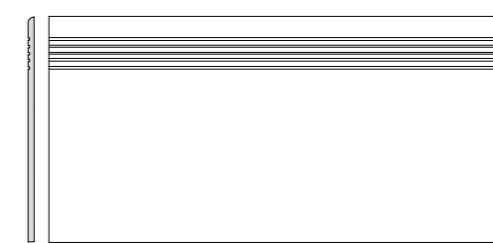
DCPVF720 slonová kost | ivory
 DCPVF721 hnědošedá | brown-grey
 DCPVF722 bílá | white
 DCPVF723 světle šedá | light grey
 DCPVF724 tmavě šedá | dark grey
 DCPVF725 černá | black
 PEI 4-5 ○ 86 | ks
 mat | matt



30×120
 R10
 B
 V3
 R



DCP84720 slonová kost | ivory
 DCP84721 hnědošedá | brown-grey
 DCP84722 bílá | white
 DCP84723 světle šedá | light grey
 DCP84724 tmavě šedá | dark grey
 DCP84725 černá | black
 PEI 4-5 ○ 78 | ks
 mat | matt



DCPSE720 slonová kost | ivory
 DCPSE721 hnědošedá | brown-grey
 DCPSE722 bílá | white
 DCPSE723 světle šedá | light grey
 DCPSE724 tmavě šedá | dark grey
 DCPSE725 černá | black
 PEI 4-5 ○ 72 | ks
 mat | matt

40×80
 30×60
 R10
 B
 V3
 R

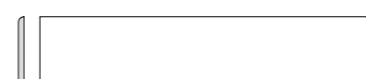


DSA89720 slonová kost | ivory
 DSA89721 hnědošedá | brown-grey
 DSA89722 bílá | white
 DSA89723 světle šedá | light grey
 DSA89724 tmavě šedá | dark grey
 DSA89725 černá | black
 ○ 72 | ks
 mat | matt



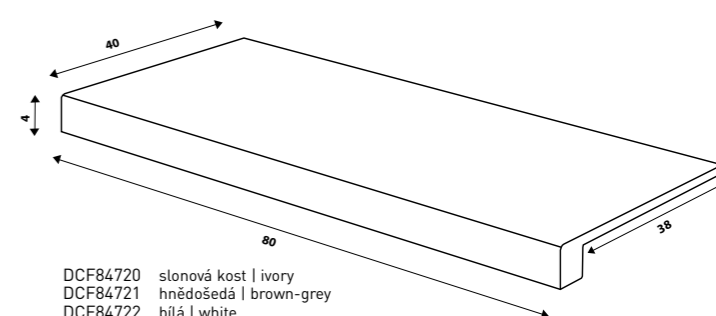
DSAS4720 slonová kost | ivory
 DSAS4721 hnědošedá | brown-grey
 DSAS4722 bílá | white
 DSAS4723 světle šedá | light grey
 DSAS4724 tmavě šedá | dark grey
 DSAS4725 černá | black
 ○ 56 | ks
 mat | matt

80×9,5
 60×9,5
 R



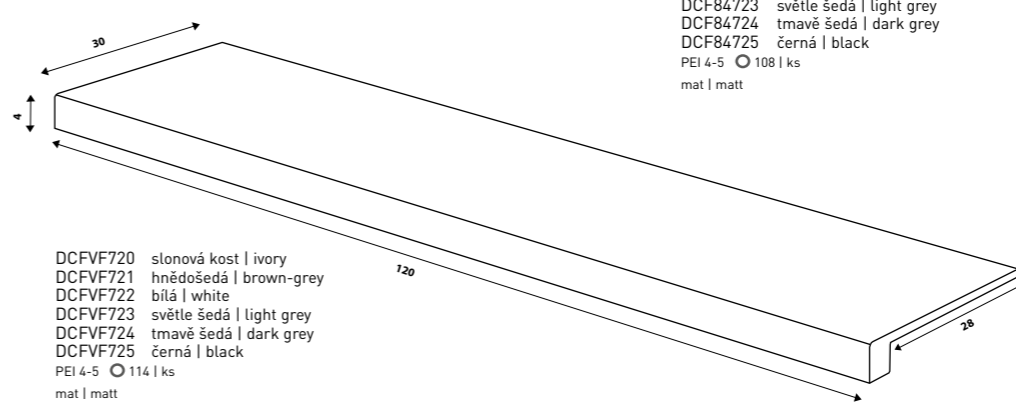
DSAPS720 slonová kost | ivory
 DSAPS721 hnědošedá | brown-grey
 DSAPS722 bílá | white
 DSAPS723 světle šedá | light grey
 DSAPS724 tmavě šedá | dark grey
 DSAPS725 černá | black
 ○ 54 | ks
 mat | matt

45×8,5
 R



DCF84720 slonová kost | ivory
 DCF84721 hnědošedá | brown-grey
 DCF84722 bílá | white
 DCF84723 světle šedá | light grey
 DCF84724 tmavě šedá | dark grey
 DCF84725 černá | black
 PEI 4-5 ○ 108 | ks
 mat | matt

40×80
 R10
 B
 V3
 R



DCFVF720 slonová kost | ivory
 DCFVF721 hnědošedá | brown-grey
 DCFVF722 bílá | white
 DCFVF723 světle šedá | light grey
 DCFVF724 tmavě šedá | dark grey
 DCFVF725 černá | black
 PEI 4-5 ○ 114 | ks
 mat | matt

30×120
 R10
 B
 V3
 R

NEWS